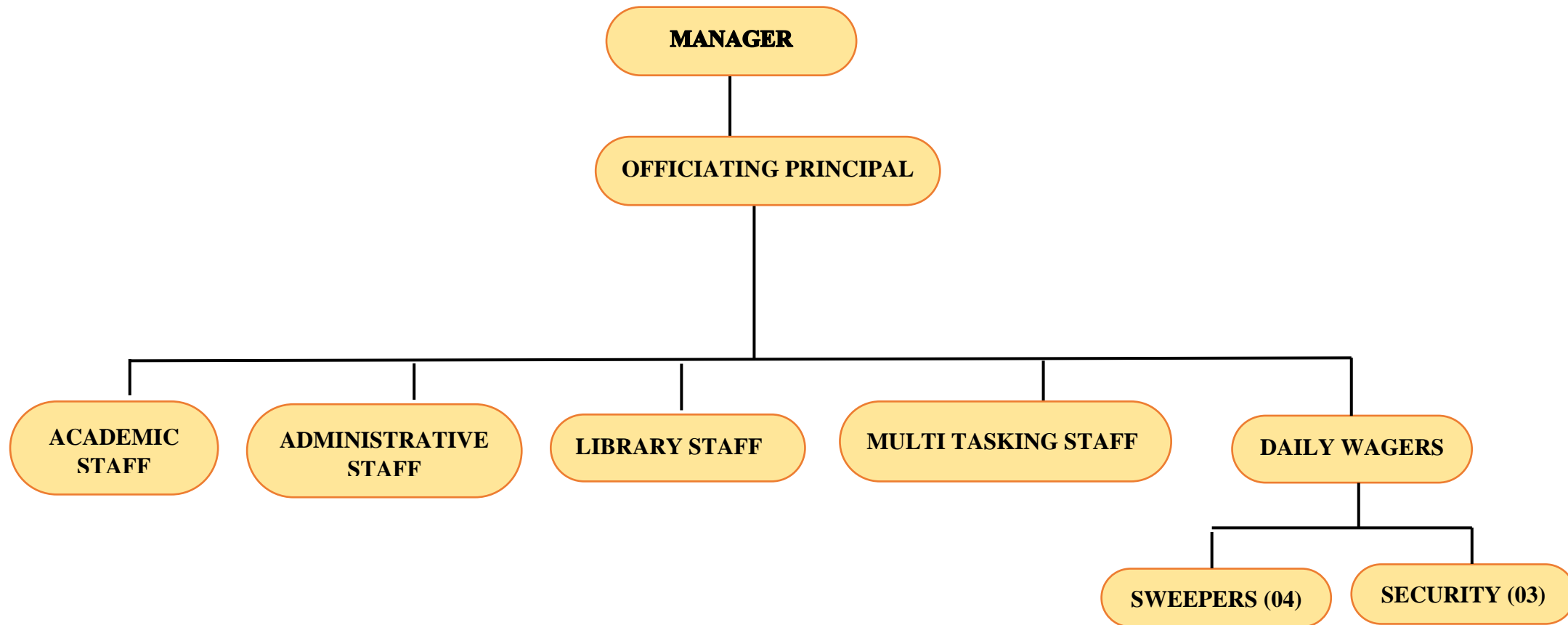
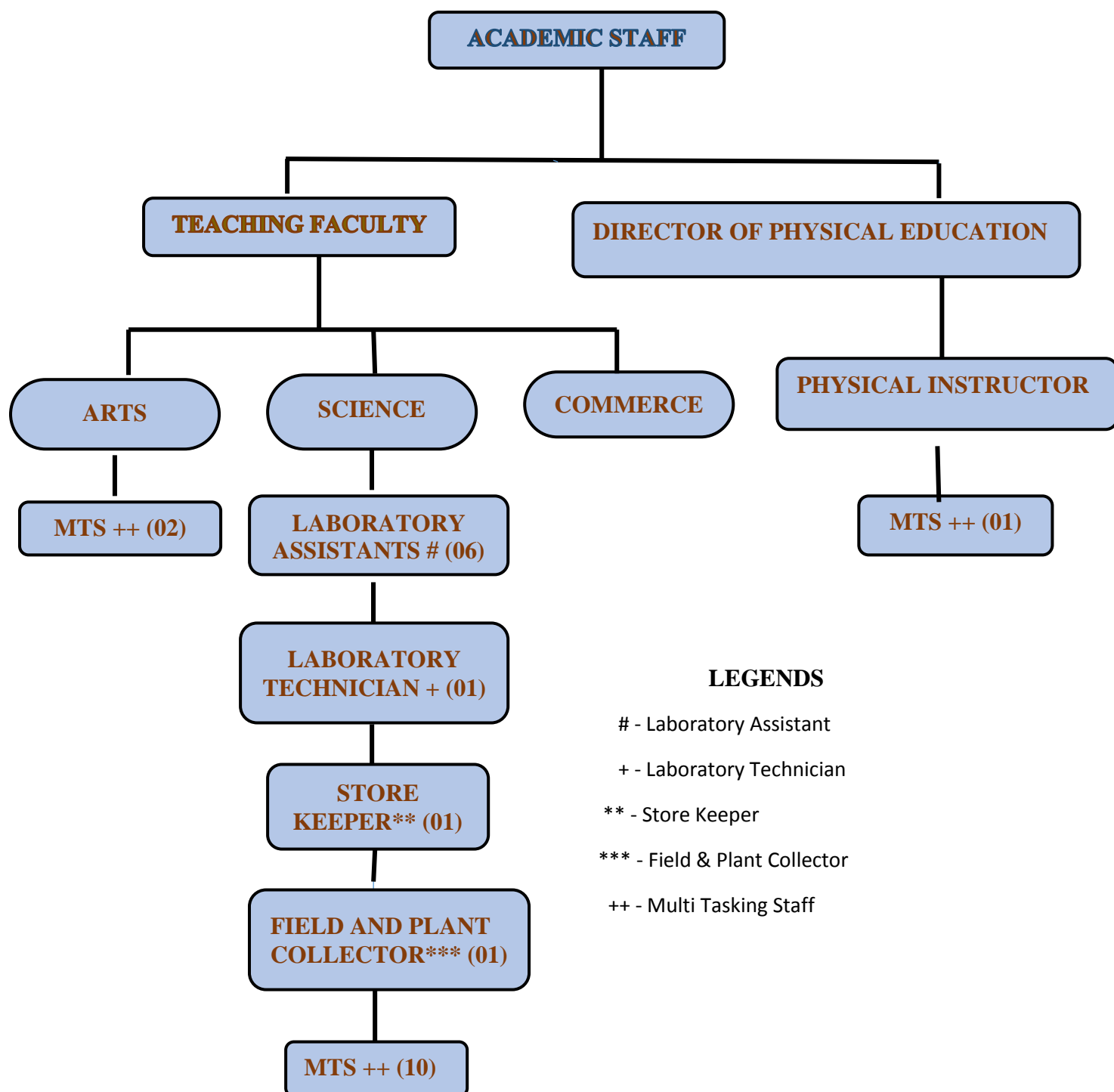


ORGANOGRAM OF THE INSTITUTION

I – UNDERGRADUATE





LEGENDS

- Laboratory Assistant

+ - Laboratory Technician

** - Store Keeper

*** - Field & Plant Collector

++ - Multi Tasking Staff

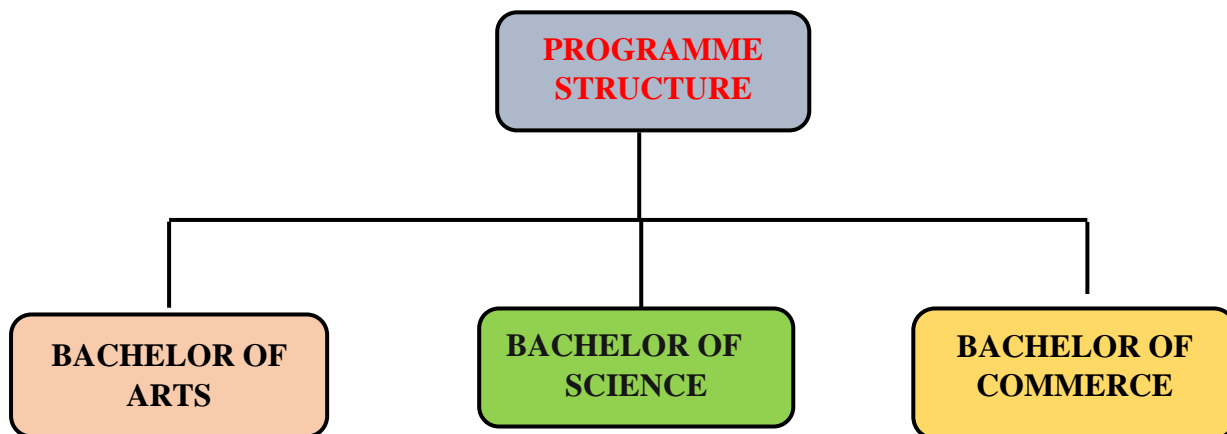
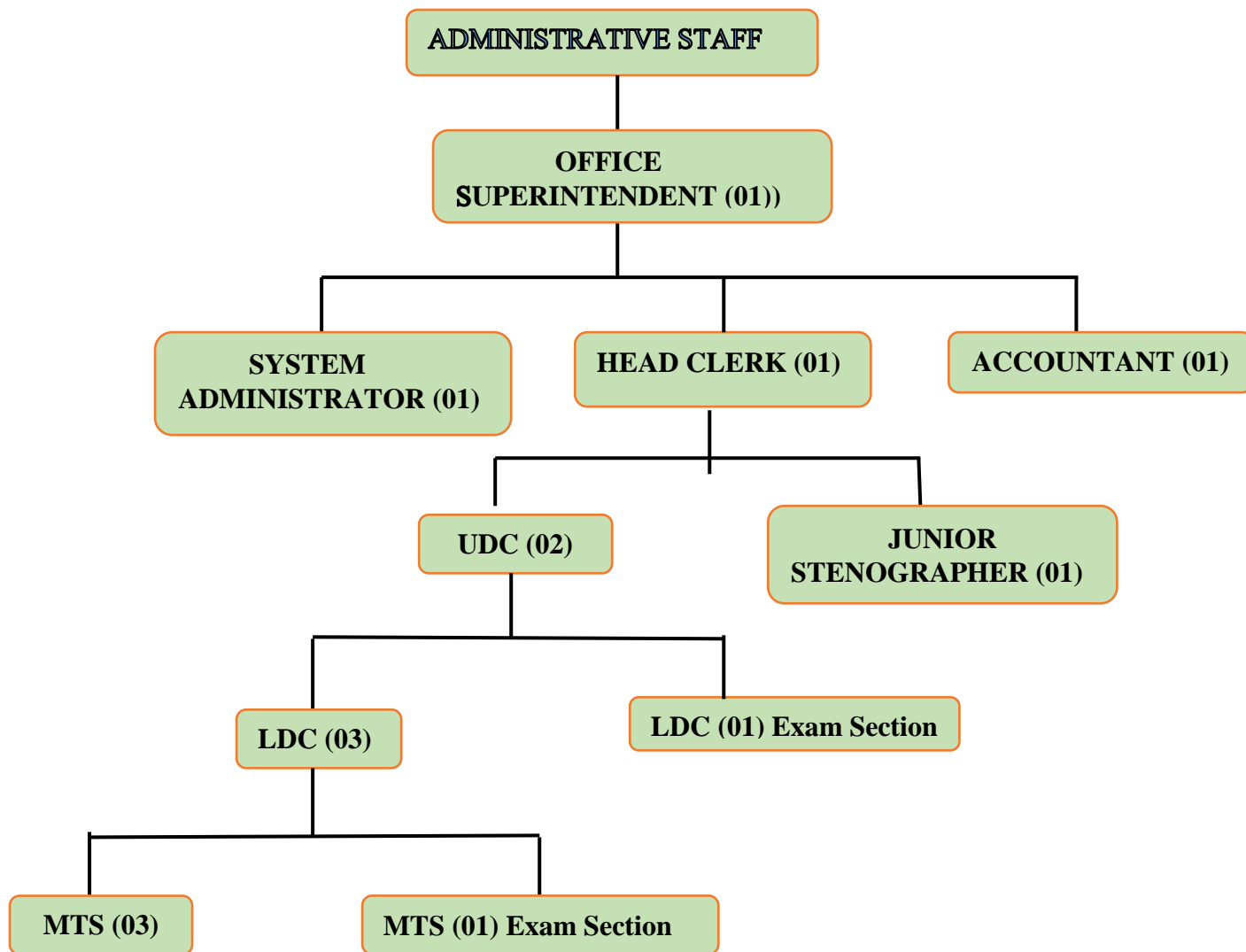
For Physics, Chemistry, Botany, Zoology, Information Technology and Psychology Departments

+ For Physics Department

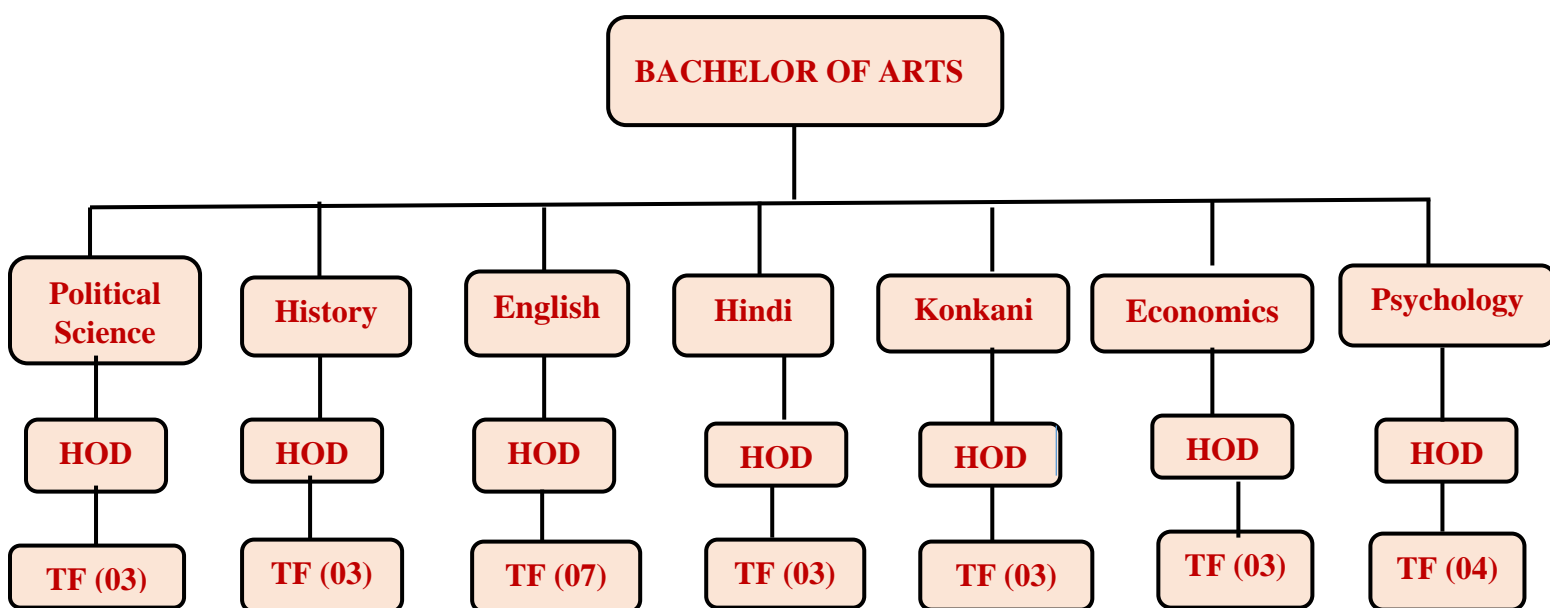
** For Chemistry Department

*** For Botany and Zoology Laboratory

++ One each for Psychology and Information Technology, two each for Physics, Botany and Zoology Departments, four for Chemistry Department.



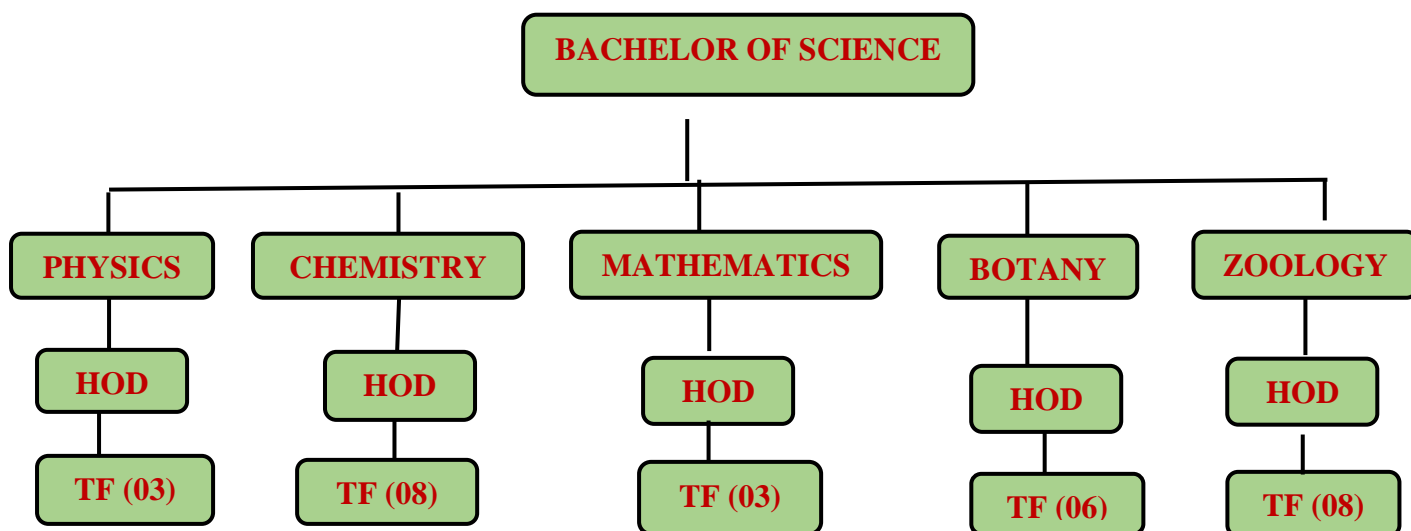
ARTS PROGRAMME STRUCTURE



TF- Teaching Faculty

Note: Teaching faculty is exclusive of HOD

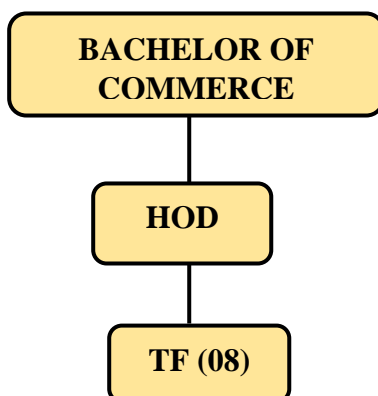
SCIENCE PROGRAMME STRUCTURE



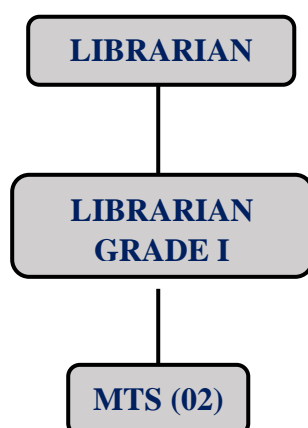
TF- Teaching Faculty (Inclusive of Off. Principal – Only Zoology)

Note: Teaching faculty is exclusive of HOD

COMMERCE PROGRAMME STRUCTURE



TF- Teaching Faculty
Note: Teaching faculty is exclusive of HOD



ORGANOGRAM OF THE INSTITUTION

II - POSTGRADUATE

T.F. Teaching Faculty

